

## Our Complete Solutions

Indore offers a complete package to its customers



EnergyCore™ - High temperature carbon core



Conductor design and manufacturing assistance



Hardware and fittings



Installation support and guidelines

Indore Composite is ISO 9001 Certified.

## Global Reach



Manufacturing Plant  
 Partners and Warehouses



Indore Composite Pvt. Ltd.  
Head Office  
Unit No.807, Marathon Icon  
Ganpatrao Kadam Marg  
Lower Parel, Mumbai, MH  
India - 400 013  
☎ +91-22-6145 2700

Indore Composite NA  
A Subsidiary of Indore Composite Pvt Ltd  
Charleston Port  
430 industrial Rd, Summerville  
SC 29483, USA

Indore Speciality Materials Pvt. Ltd.  
A Subsidiary of Indore Composite Pvt Ltd  
Unit No.807, Marathon Icon  
Ganpatrao Kadam Marg  
Lower Parel, Mumbai, MH  
India - 400 013  
☎ +91-22-6145 2700

Indore International SARL  
A Subsidiary of Indore Composite Pvt Ltd  
Lot N° 189, Entrepôt 5 & 6  
Zone Franche  
Tangier - Morocco  
☎ +212-697580104

Indore Gel Pvt. Ltd.  
Plot no. 3, OHM Industrial  
Infra Park Village - Dehri  
New GIDC  
Umbergaon, GJ  
India - 396 170  
☎ +91-0260 256 4491

✉ info@indore.co.in  
🌐 www.indore.co.in

**INDORE**  
Strengthening Tomorrow!



**EnergyCore™**  
ADVANCED COMPOSITE CARBON  
CORE FOR **ACER™** HTLS CONDUCTOR



Manufactured in India for the first time



## We are Indore Composite

At its roots Indore is a company that is consistently driven by innovation, constantly growing at a steady pace by combining its knowledge, technology and the talented individuals it has on hand, this has made Indore well known for its innovative products in cable protection solutions and engineering plastic.

Established in 1994, Indore is well equipped with 4 plants, including 1 plant in Morocco. Through the years Indore has become known for its innovative products, consistent quality, solution driven approach and reliability across the world.



Being an environmentally conscious organization, Indore is focused on sustainability and has discovered applications and usability for 95% of the scrap generated, either within or outside the organization.

## Advanced Composite Lab

Indore has a fully equipped state-of-the-art composite testing laboratory, located at Ambarnath, India, accredited by the **National Accreditation Board for Testing and Calibration Laboratories** requirements.

- The facility is managed by a team of highly trained and qualified professionals.
- The lab is capable of providing complete testing on composite core based on international standards.

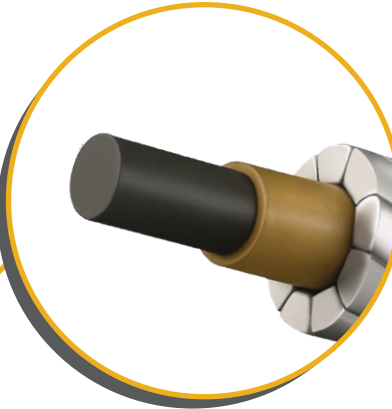


## Introducing The EnergyCore™

The EnergyCore™ is the latest invention by Indore's experienced R&D team, which will fulfill the needs of future efficient, sustainable transmission and distribution infrastructure.

It is an advanced composite carbon fiber core that has been specially designed for HTLS conductors (High Temperature Low Sag). It is manufactured by the pultrusion process using special carbon fibers and a proprietary high temperature resin system that ensures the highest performance over a long period of time.

The EnergyCore™ is covered with an electrically insulating glass fiber layer, which increases the core performance and flexibility, in addition to protecting the aluminum strands from galvanic corrosion.



## ACER™ – Aluminium Conductor EnergyCore Reinforced

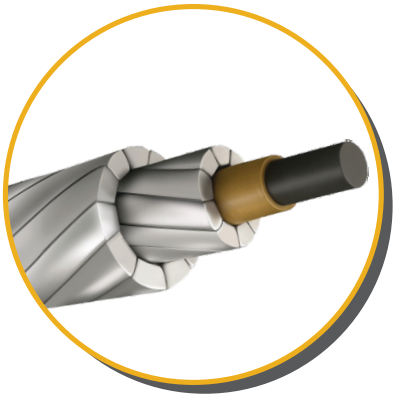
ACER™ is an Advanced / HTLS (High Temperature Low Sag) conductor with a carbon composite core, EnergyCore™. The unique features of EnergyCore™ make it an optimal choice for HTLS conductors in power transmission and distribution.

High tensile strength and the lightweight of the core accommodates more aluminum and allows more power flow through the conductor.

Low linear expansion results in reduced thermal sag, decreasing the risk of sag-trip outages and vibration.

Being non-corrosive the EnergyCore™ resists environmental degradation under severe weather conditions, such as ice and wind load events, it is able to resist failures due to its greater strength.

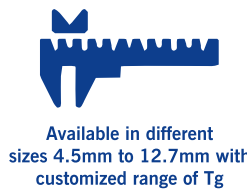
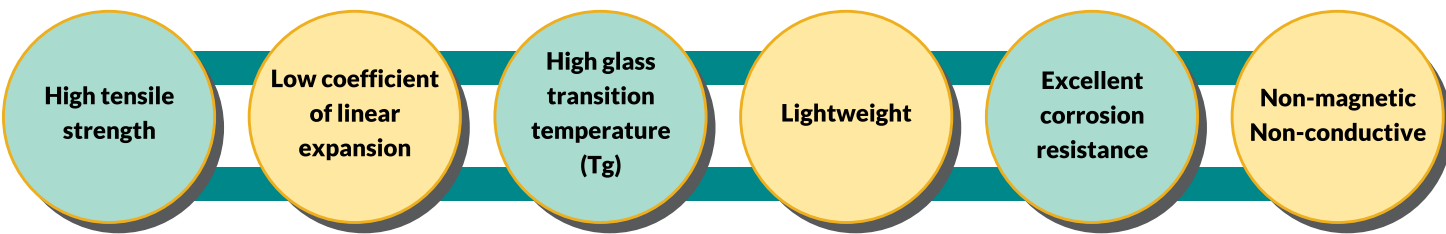
The EnergyCore™ is compatible with all types of aluminum and its alloys eg. AZR, super thermal resistant aluminum alloy etc.



## Comparison of ACER™ with conventional ACSR conductors



## Features of The EnergyCore™



## Indore's Accessory Offerings

ACER™ conductors are installed using special accessories and associated hardware fittings designed and supplied by Indore.

- Dead ends
- Joints
- Repair sleeves
- Jumper connectors
- Terminal connectors

